
MOAB INTERAGENCY FIRE CENTER 2024 ANNUAL REPORT



2024 MIFC Dispatch Staff L to R: Desi Calvert, Duckie Drake, Rachel Cresto, Shelby Carter

Canyon Country BLM (Moab and Monticello Field Offices)

Green River District BLM (Price Field Office)

Manti-La Sal National Forest (Ferron/Price, Sanpete, Moab and
Monticello Ranger Districts)

National Park Service Southeast Utah Group

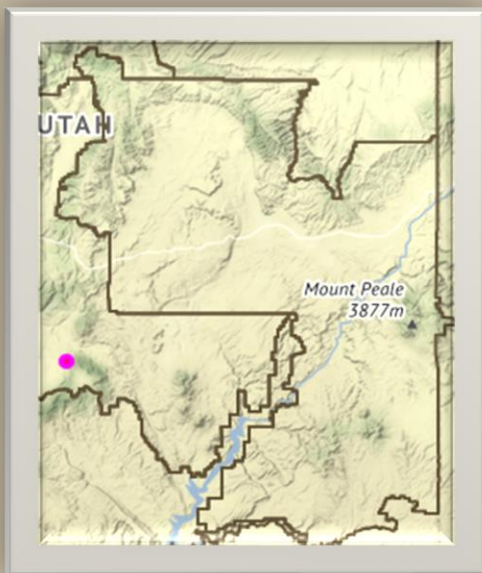
Utah State Forestry, Fire & State Lands, Southeast Area

BIA Ute Mountain Field Office

Navajo Area Agency

Department of Defense

MIFC DISPATCH ZONE



The Moab Interagency Fire Center (MIFC) is the dispatch center for Southeast Utah which includes Canyon County District and Green River District (BLM); Manti-La Sal National Forest (USFS); Utah Division of Forestry, Fire and State Lands Southeast Area (SES); National Park Service Southeast Utah Group (NPS); Ute Mountain Field Office (BIA) and Navajo Region (BIA).

The dispatch area involves over 10 million acres of terrain that ranges from grasslands at 4,000 feet to forested lands above 12,000 feet in elevation. Land status throughout the area is highly fragmented. MIFC has an average of 200-300 incidents per year, with a fire season that extends throughout the year with prescribed fires and pile burning in the spring, fall, and winter.

2024 MOAB INTERAGENCY FIRE CENTER STAFFING

Center Manager – Rachel Cresto

Assistant Center Manager – Duckie Drake

BLM Lead Dispatcher – Vacant

USFS Lead Dispatcher – Shelby Carter

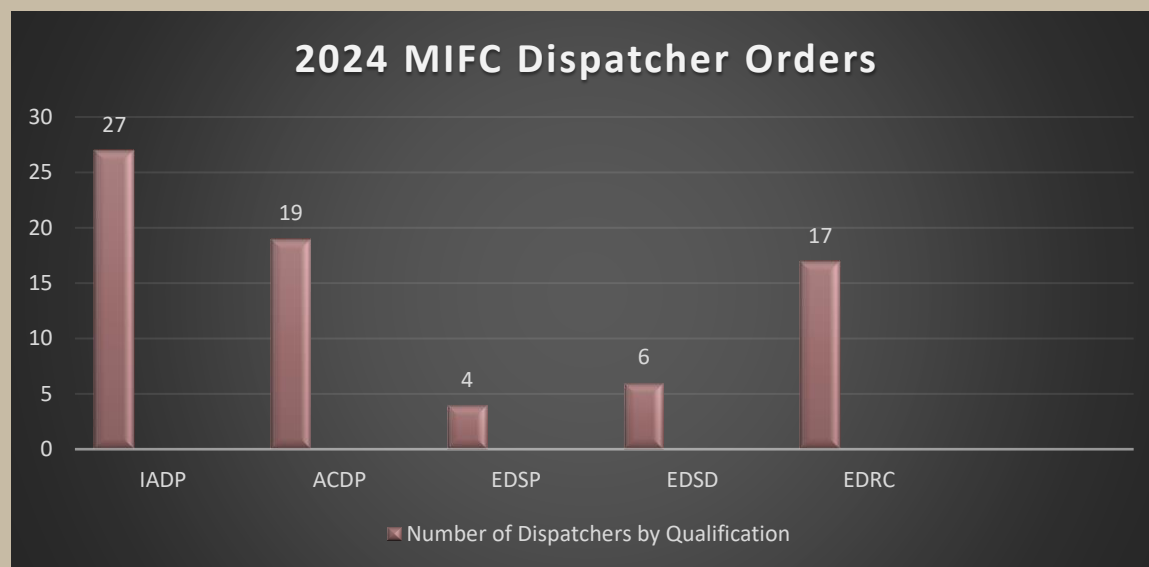
USFS Logistics Dispatcher – Vacant

State Lead Dispatcher – Desi Calvert

BLM Logistics Dispatcher- Vacant

With the increase in staffing described below and an average fire year, MIFC dispatcher orders were average. For the 2024 fire season incoming dispatchers that weren't employed in a PFT or Career Seasonal position were on IROC Resource Orders (see chart below).

MIFC has hosted for the second year in a row, the Harpers Ferry Job Corps. A USFS program that helps give students working through their program, on the job training in various fields. This year we had two groups from Weber Basin Job Corps, UT and two groups from Harpers Ferry Job Corps, WV.



The Moab Interagency Fire Center was able to increase staffing from 2023 to 2024 by 50 percent. 2024 showed a critical leadership vacancy filled with Assistant Center Manager being onboarded late season 2023. The MLF 18/8 Lead Initial Attack Dispatch position was filled and staffed during 2024. This left the fire center with one MLF PFT vacancy and two BLM vacancies, the Career Seasonal Lead Initial Attack Dispatch position and the Temporary Seasonal.

2024 MIFC ZONE FIRE ACTIVITY

Fire activity was average in number of fires and average for acres burned. The first wildland fire of the year occurred on April 12th and the last occurred on November 14th. The Moab Fire Zone had 4 large fires during the 2024 season.

Large fire activity, as defined by the National Interagency Coordination Center, is 100 acres or larger, in timber, or 300 acres or larger, in grass or brush fuel types.

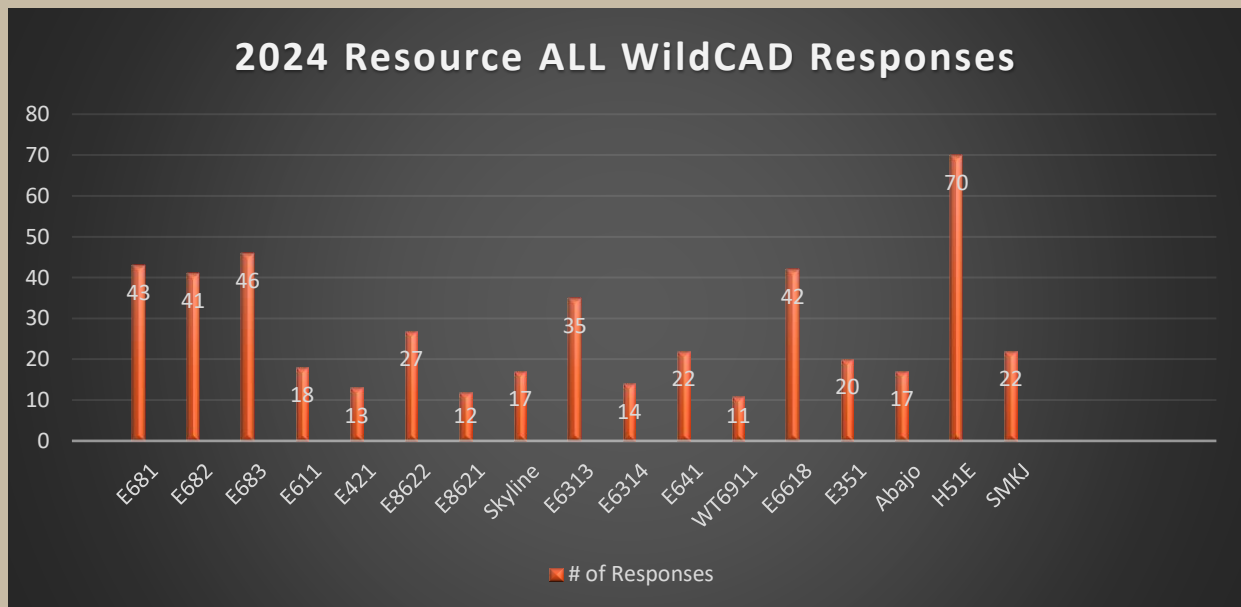
The **Babylon Fire** started on the Monticello Ranger district on July 5th and burned 199 acres. This fire was managed by a local Type 3 Incident Management Team. The **Black Ridge** fire started on the Canyon Country District BLM on August 21st and burned 305 acres. The Black Ridge fire remained a Type 4 complexity.

Prairie fire started on September 16th on the Canyon Country District BLM and burned 1,581 acres. This fire was short duration and was managed by a T3 Incident Commander.

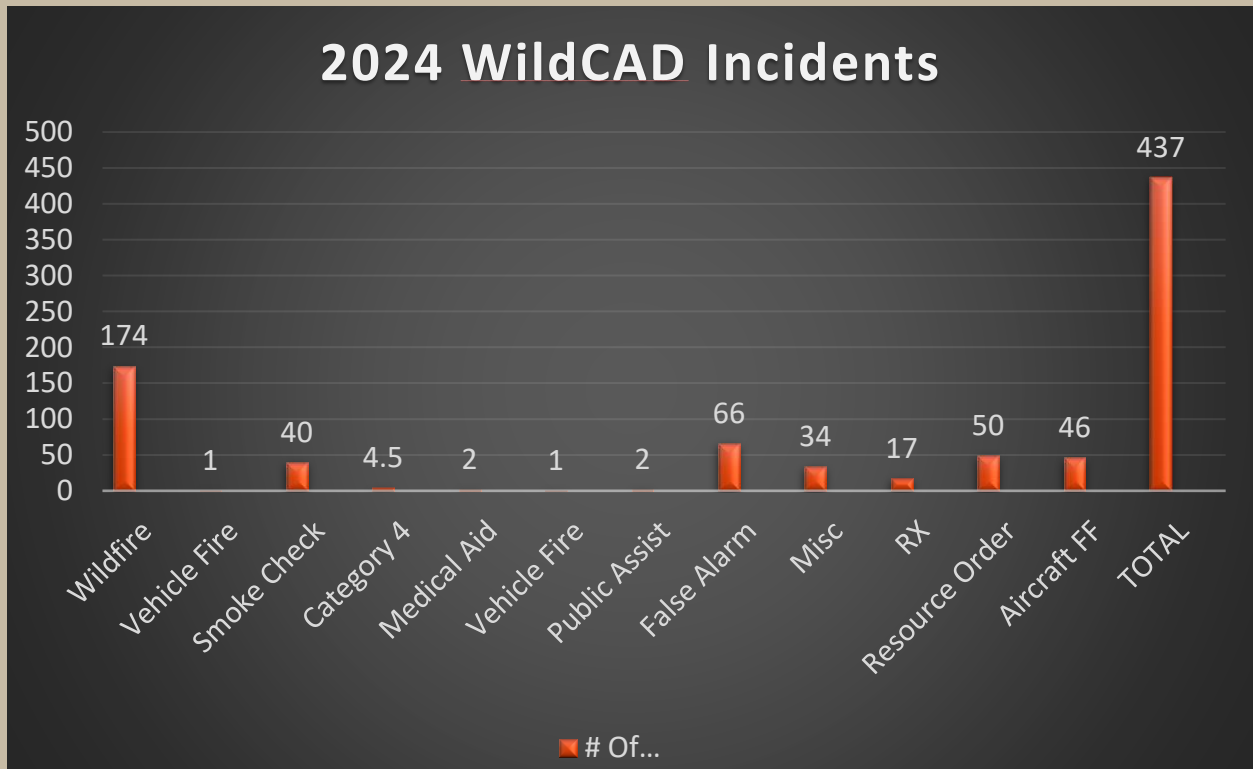
The **Verdure Creek** fire started on October 13th and burned 151 acres on the Abajo Mountains on the Manti LaSal National Forest. The fire was managed by a local Type 3 Team.

See data below for acres, fires, and resource statistics.

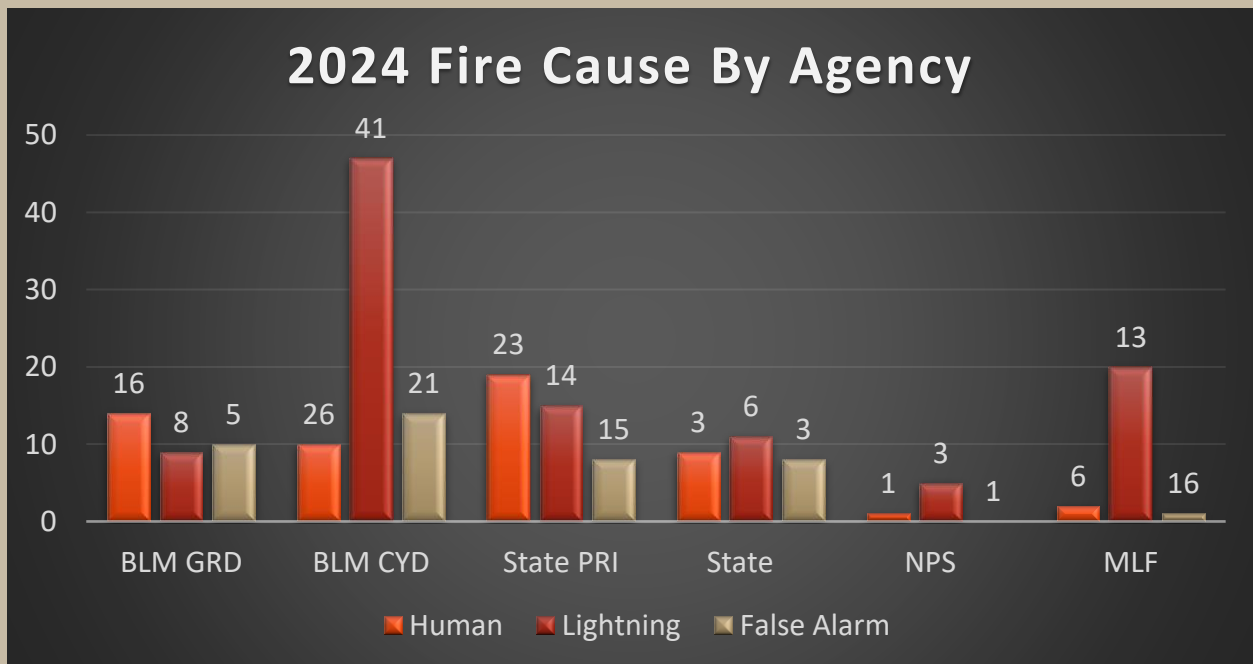
2024 MIFC WILDCAD RESOURCE RESPONSE



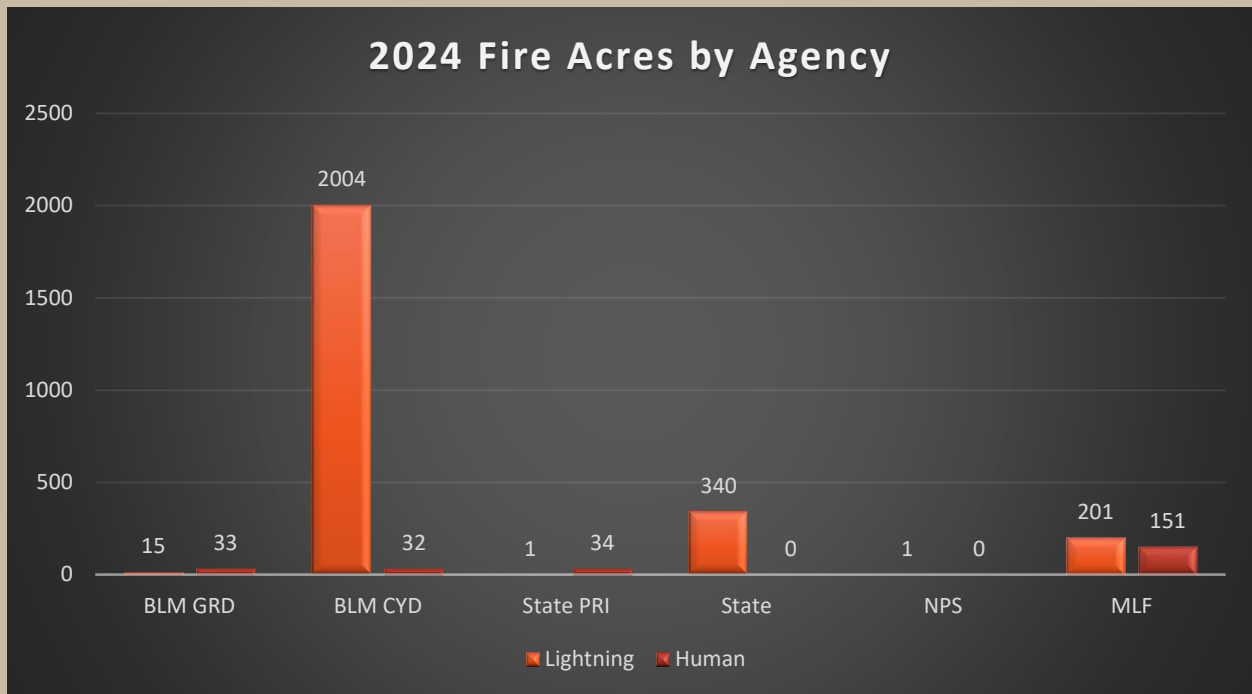
2024 MIFC WILDCAD INCIDENTS



2024 MIFC FIRE ZONE FIRE CAUSE BY AGENCY



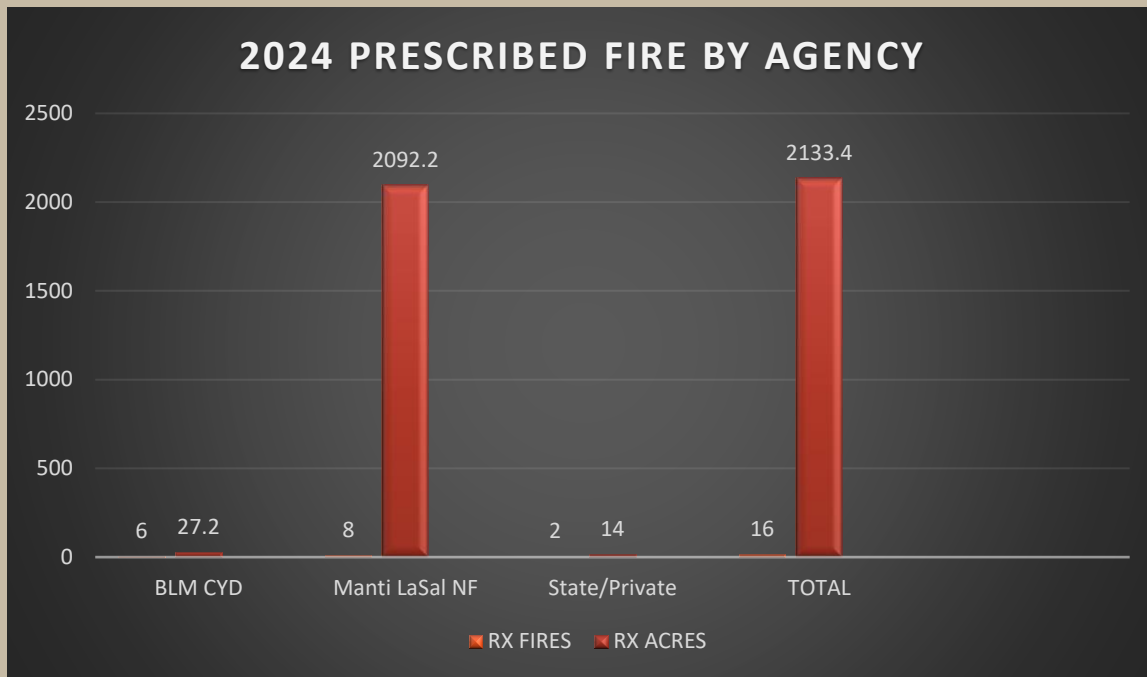
2024 MIFC FIRE ZONE FIRE ACRES BY AGENCY



2024 FIRES BY CLASS AND SIZE

		2024 UT-MFC FIRES & ACRES BY STATE & AGENCY							
Agency		A	B	C	D	E	F	G	Agency Total
Agency	BIA	0	0	0	0	0	0	0	0
	BLM	71	13	5	0	1	1	0	91
	NPS	4	0	0	0	0	0	0	4
	ST	35	10	1	0	0	0	0	46
	USFS	13	4	0	2	0	0	0	19
Class Totals		123	27	6	2	1	1	0	160

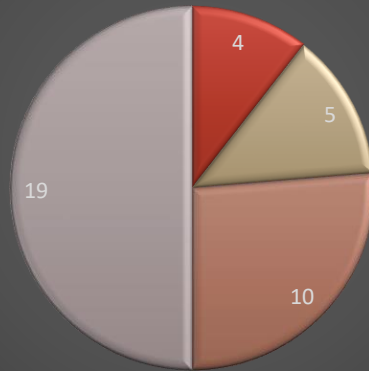
2024 PRESCRIBED FIRE ACTIVITY



Sand Island RX Pictured Above (CYD BLM)

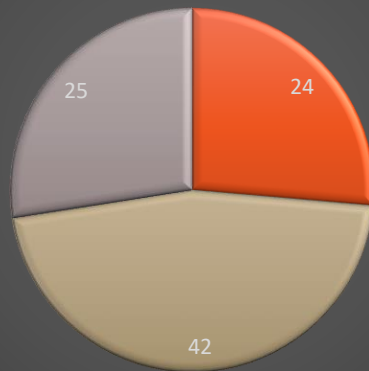
2024 FIRES BY UNIT

Manti LaSal N.F. Fires By Ranger District



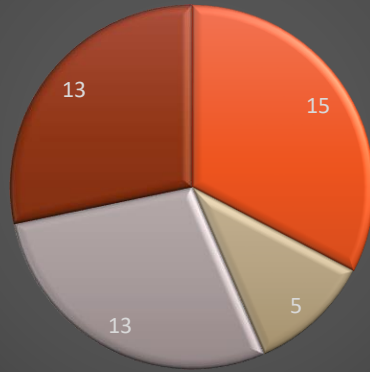
Sanpete RD Moab RD Monticello RD Total

CYD and GRD BLM Fires By Field Office



Price F.O. Moab F.O. Monticello F.O.

Southeast Utah State Fires By County



Carbon Emery Grand San Juan

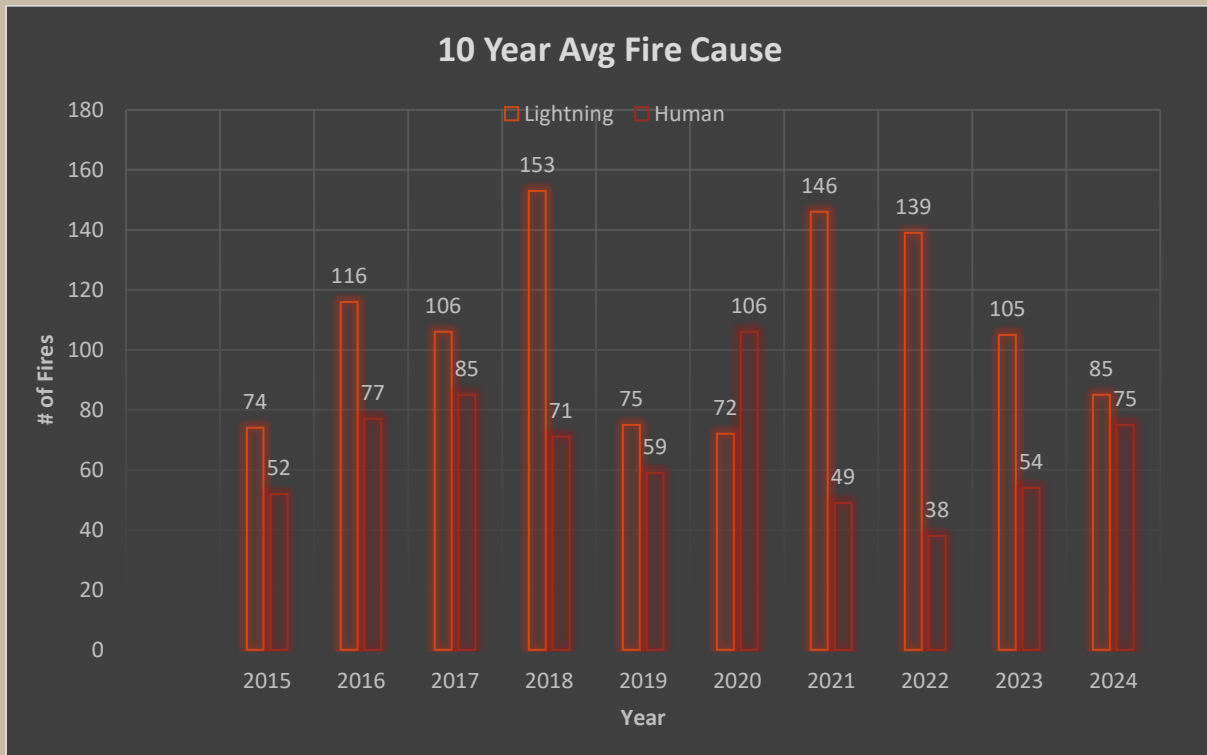
National Park Service Fires Southeast Utah Group by Park



Arches Canyonlands

10 YEAR AVERAGE FIRE CAUSE

For the 2024 fire season, the total number of fires for the fire zone was 160. 75 human caused and 85 lightning.



10-YEAR AVERAGE FIRE OCCURRENCE BY YEAR

YEAR	USFS	GRD	CYD	NPS	SES/PRI	BIA	TOTAL
2015	28	0	50	2	45	0	125
2016	37	0	80	4	72	1	194
2017	37	0	83	3	63	3	189
2018	57	0	93	5	67	2	224
2019	27	0	54	4	48	1	134
2020	41	0	74	2	60	0	177
2021	51	15	76	1	52	0	195
2022	23	16	77	1	64	0	181
2023	28	23	58	7	61	0	177
2024	19	24	67	4	56	0	170
Total	348	78	712	33	588	7	1596
10-YR AV	34.8	7.8	71.2	3.3	58.8	0.7	159.6
% OF TOTAL	21.80%	4.89%	44.61%	2.07%	36.84%	0.44%	100.00%

10-YEAR AVERAGE FIRE ACRES BY YEAR

YEAR	USFS	GRD	CYD	NPS	SES/PRI	BIA	TOTAL
2015	117.32	0.00	20.11	0.20	168.26	0.00	305.89
2016	4,953.50	0.00	76.56	36.30	89.41	0.00	5,155.77
2017	215.79	0.00	317.70	0.30	119.18	11.60	664.57
2018	59,932.02	0.00	2,996.14	0.50	3,828.61	0.20	66,757.47
2019	6,294.90	0.00	42.17	0.41	54.12	0.25	6,391.85
2020	417.72	0.00	182.94	20.80	454.70	0.00	1,076.16
2021	13,906.10	5,696.50	248.52	0.10	6,994.72	0.00	26,845.94
2022	6.00	3.00	24.00	0.10	36.00	0.00	69.10
2023	2,046.40	1,074.00	1,770.00	6.50	1,297.00	0.00	6,193.90
2024	352.00	48.00	2,036.00	1.20	375.30	0.00	2,812.50
Total	88,241.8	6,821.5	7,714.1	66.4	13,417.3	12.1	116,273.2
10-YR AV	8,824.2	682.2	771.4	6.6	1,341.7	1.21	11,627.3
% OF TOTAL	75.89%	5.87%	6.63%	0.06%	11.54%	0.01%	100.00%

AVIATION

Aircraft orders for the 2024 fire season were below average both in numbers of orders and type of aircraft.

For the 2024 fire season, 132,864 gallons of water and 66,290 gallons of fire retardant were delivered on fires across the district.



SMOKEJUMPER SUPPORT

The USFS Smokejumpers from McCall, Idaho set up a jump base out of Price, Utah sponsored by the Manti-Lasal NF & MIFC for the 4th year in 2024 arriving on June 17th. The smokejumpers & associated aircraft were based out of the Price airport and available for local response in the MIFC Fire Zone while remaining as a Regional & National resource. They responded to seven incidents within the MIFC Fire Zone and six incidents off unit from June through August.



Butts Point Fire 2024

MOAB HELITACK

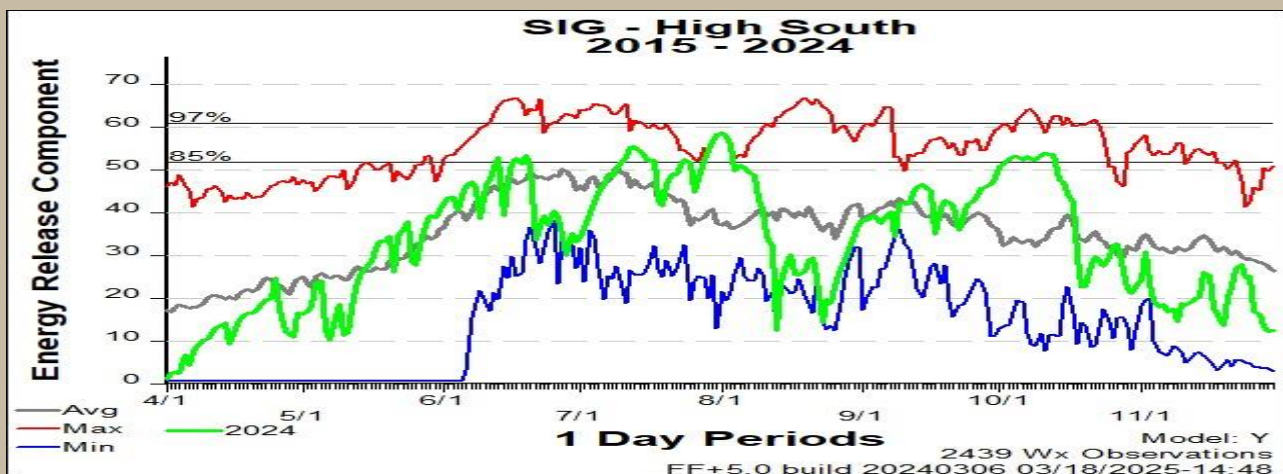
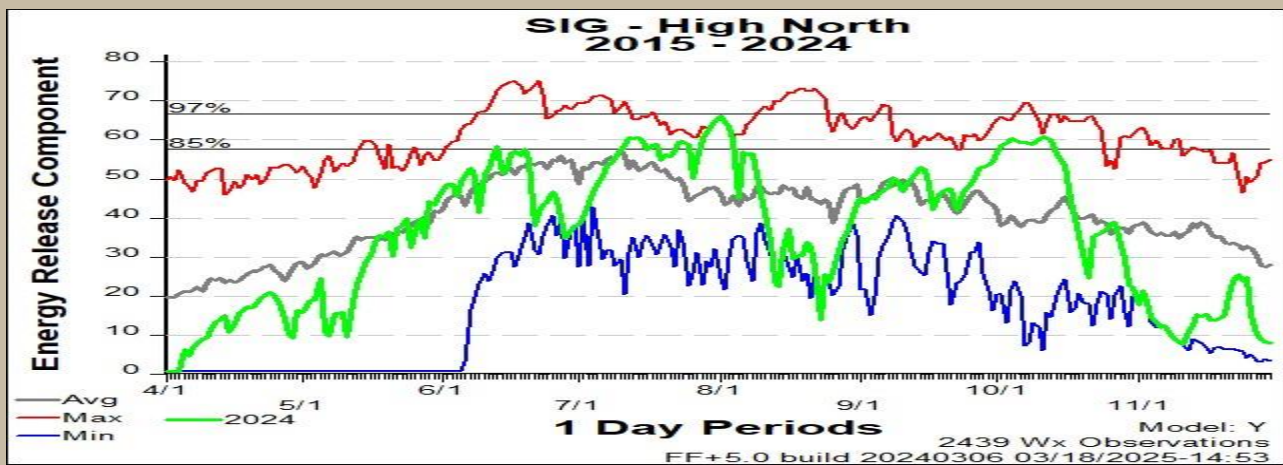
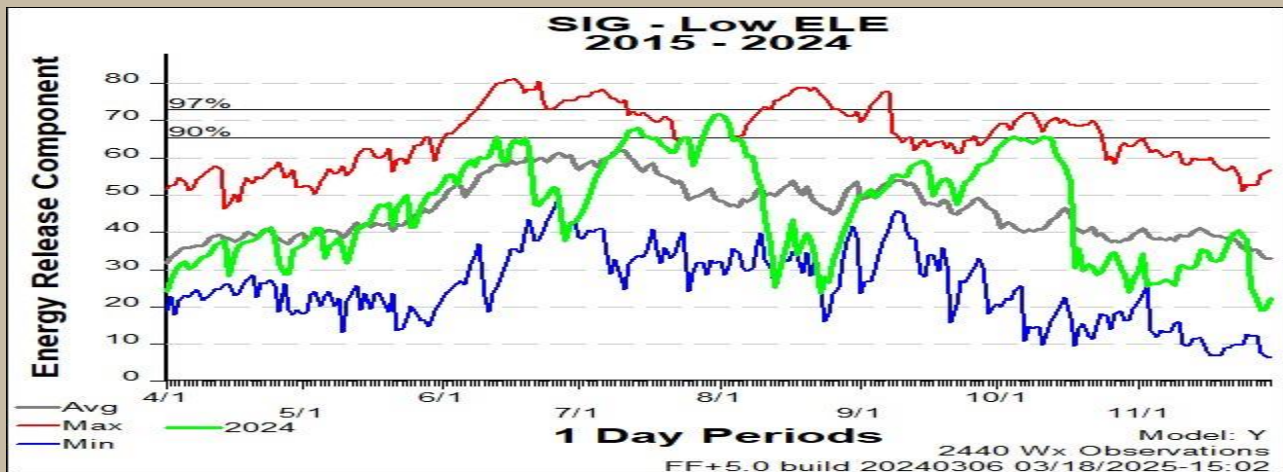


2024 Moab Helitack Crew Photo

2024 was the first season of a new 5-year contract cycle with 351E and Reeder Flying Service and the first full season with 3 new permanent/career seasonal employees, Tyler Maine, Marshall Mabley and Dakota Sumpter. Moab Helitack had a contract start date of 5/23/24 and end date of 9/17/24 for a total of 118 days. Flights totaled 287 with a total flight time of 194.9 hours, 152.2 hours on district and 42.7 off district. They also had 26 initial attack fires, 20 extended attack fires and one operational STEP. Their first fire response was the Ida Gulch Fire on June 1st and last was the Prairie Fire on September 16th. The helitack crew hosted 27 detailers and 41 trainees and sent out 2 detailers to work with Las Vegas Helitack

2024 ERC VALUES

During the 2024 season, all Fire Danger Rating Areas (FDRA's) saw record ERC's in late July early August. By September the ERC's started to drop. October saw the ERC's for all FDRA's on the rise again, this coincided on the High South FDRA with the Verdure Creek Fire. The ERC's dropped to normal ranges for the rest of the fall and winter months. See ERC charts below for reference.

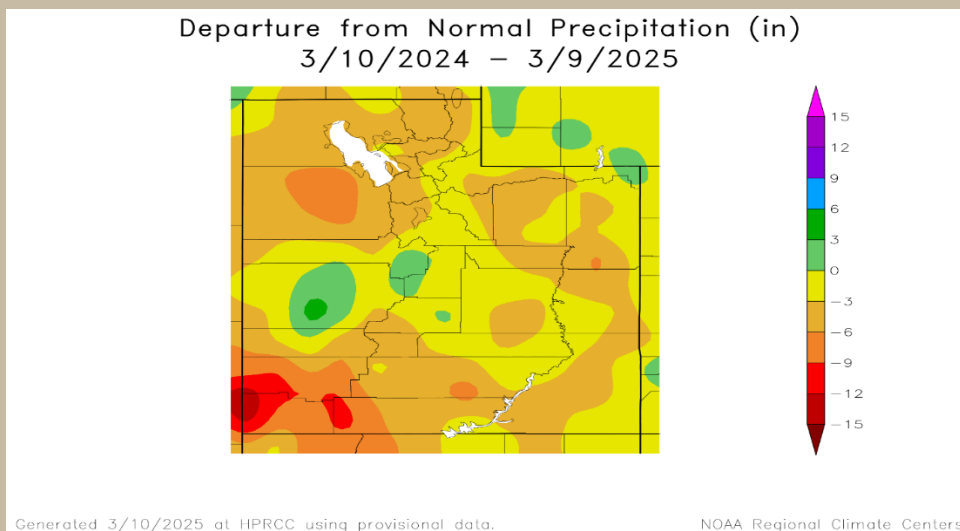
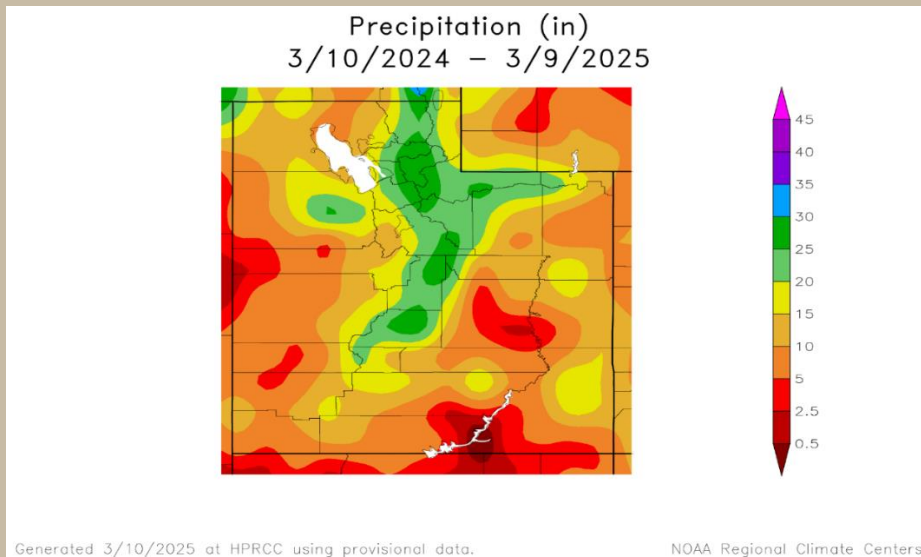


2024 PRECIPITATION

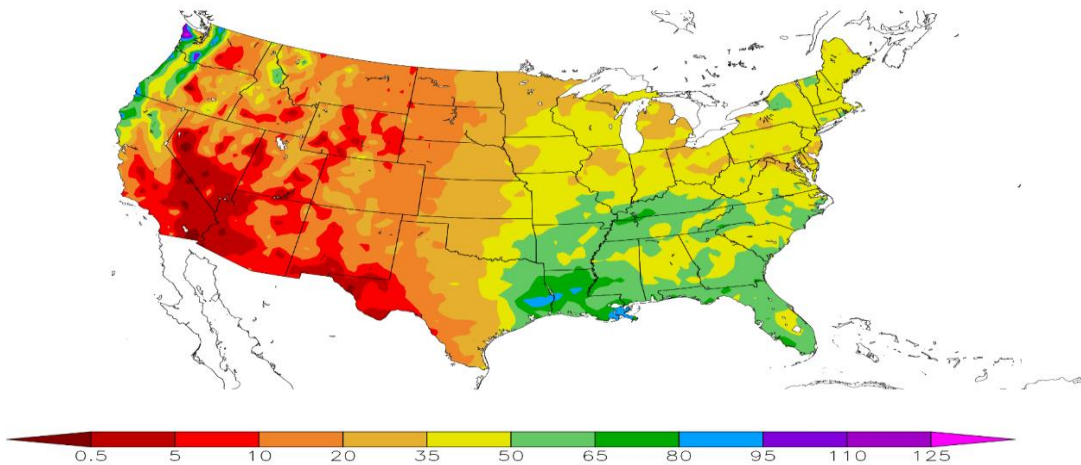
The 2024 fire season saw average to below average precipitation for the Moab Fire Zone. The Moab valley experienced a large flood event on June 21st. Monsoons moved into the fire zone at the end of June, first part of July. August, September, and October were drier than normal.

For more information on climate maps, click the link below.

<https://hprcc.unl.edu/maps.php?map=ACISClimateMaps>



Precipitation (in)
3/10/2024 – 3/9/2025



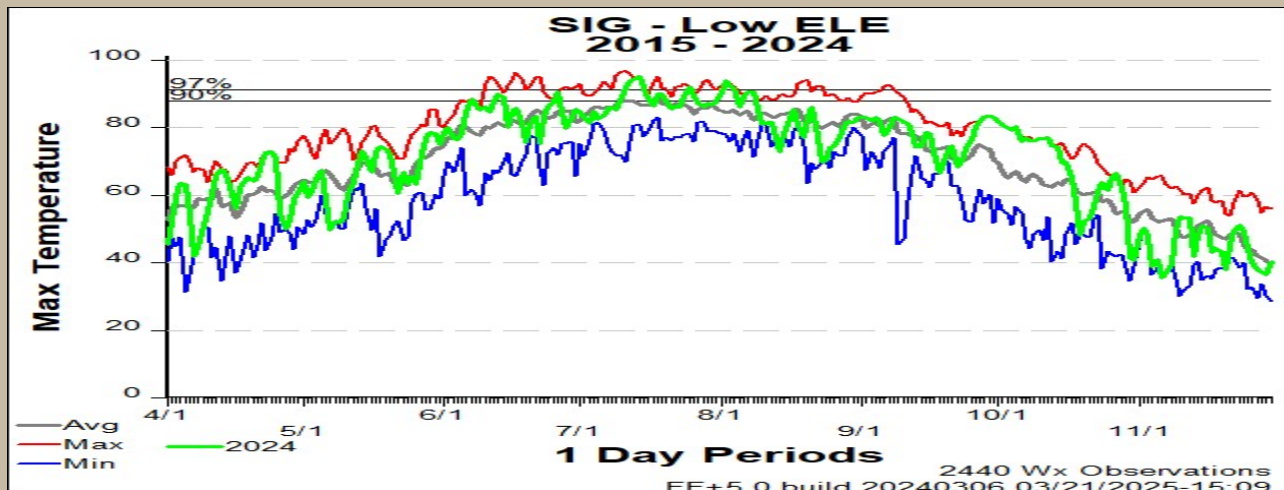
Generated 3/10/2025 at HPRCC using provisional data.

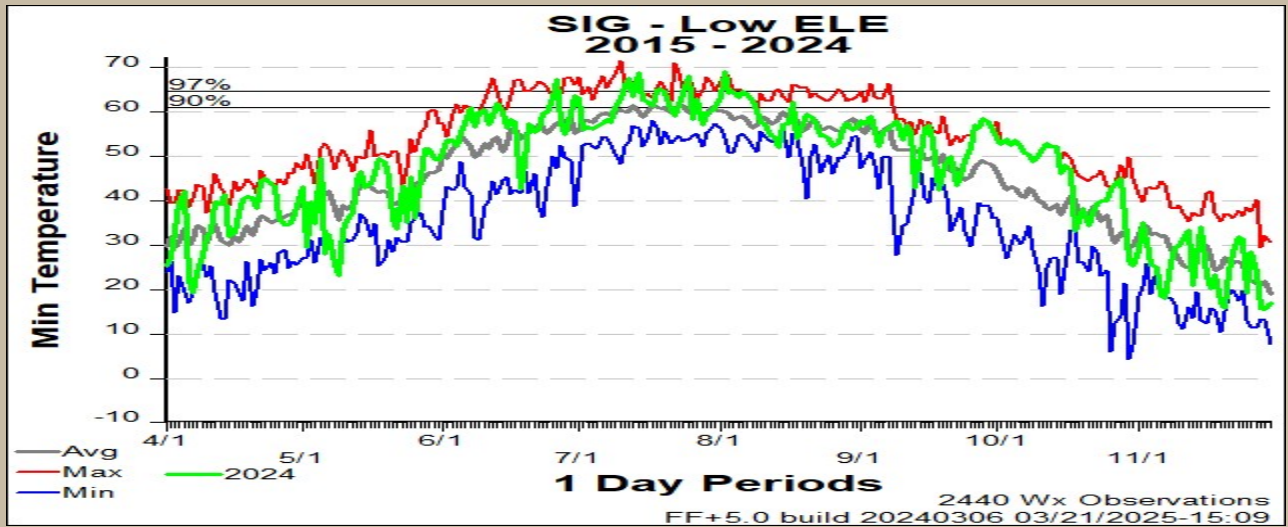
NOAA Regional Climate Centers

2024 TEMPERATURE

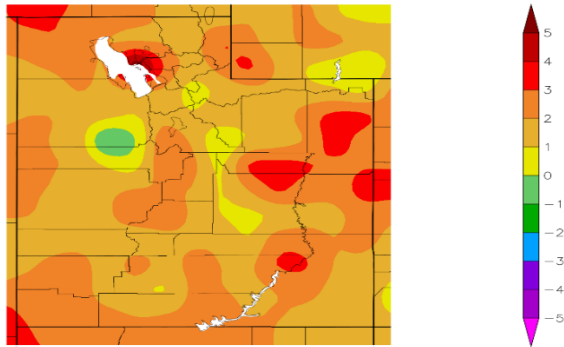
Early season saw the fire zone with some record low temps between May and June, as indicated with the Min Temperature Graph.

Temperatures for the 2024 fire season hit record highs in mid-June, mid-July, mid-August and October for the low elevation areas across the fire zone..





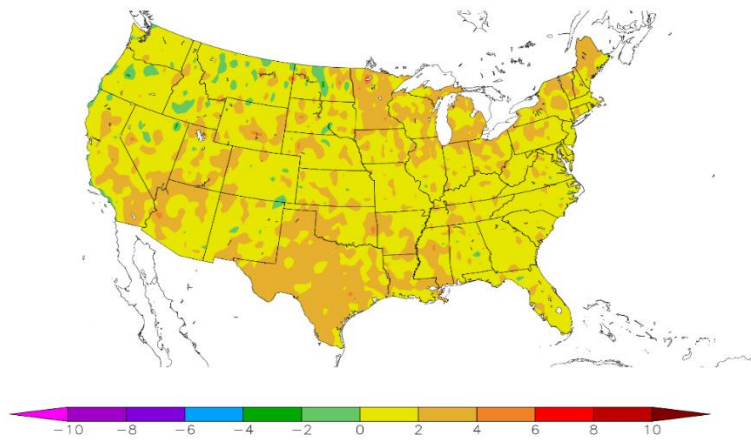
Departure from Normal Temperature (F)
3/1/2024 - 2/28/2025



Generated 3/10/2025 at HPRCC using provisional data.

NOAA Regional Climate Centers

Departure from Normal Temperature (F)
3/1/2024 - 2/28/2025

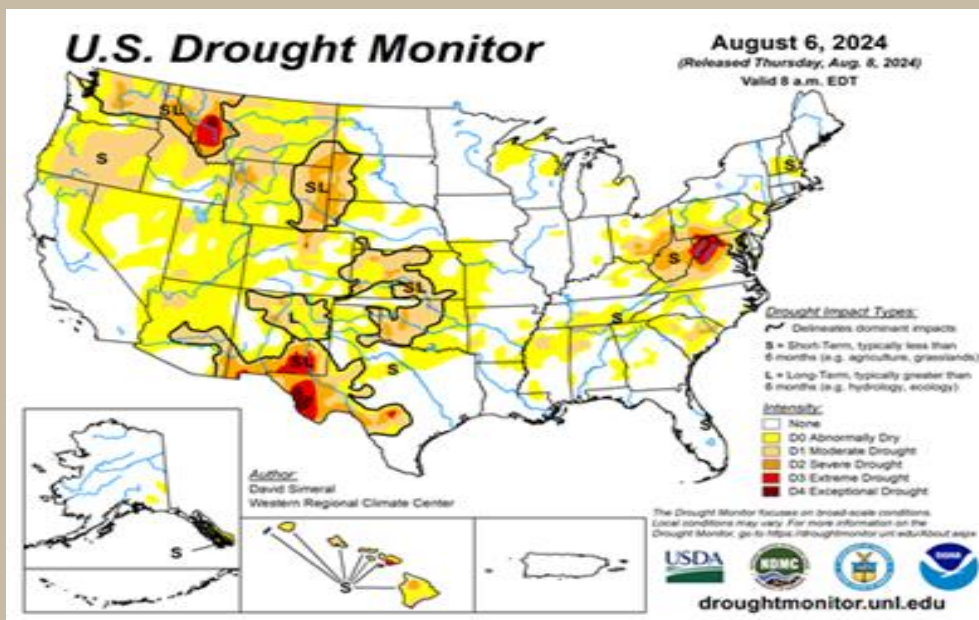
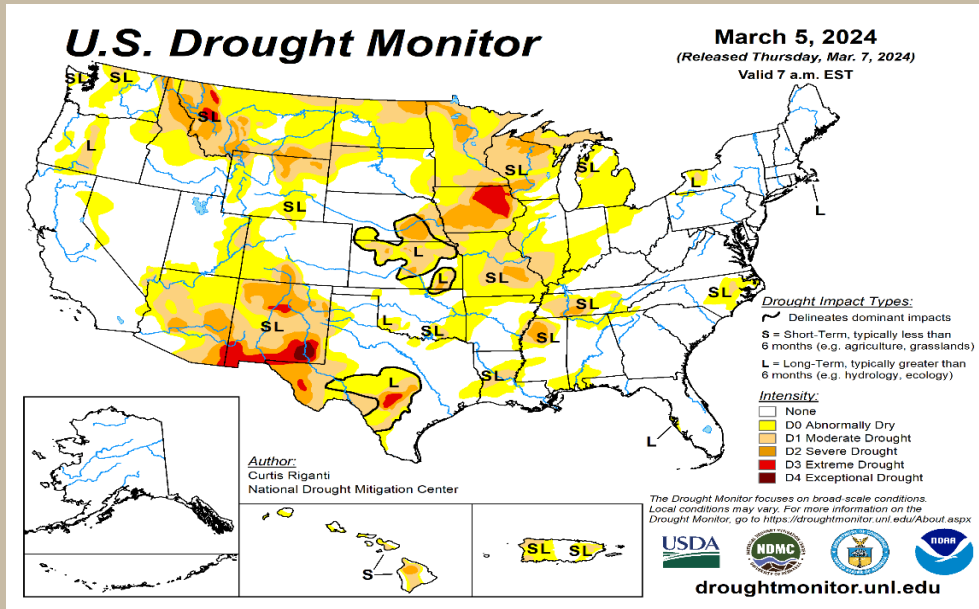


Generated 3/10/2025 at HPRCC using provisional data.

NOAA Regional Climate Centers

2024 DROUGHT MONITOR

2024 saw a drier trend in the eastern part of Utah, specifically the Moab Fire Zone, with a smaller area of moderate drought creeping in north of the Colorado river into the eastern side of the bookcliffs in March. August saw the moderate drought lift and the eastern side of Utah was abnormally dry.



RED ROCK REGULAR CREW

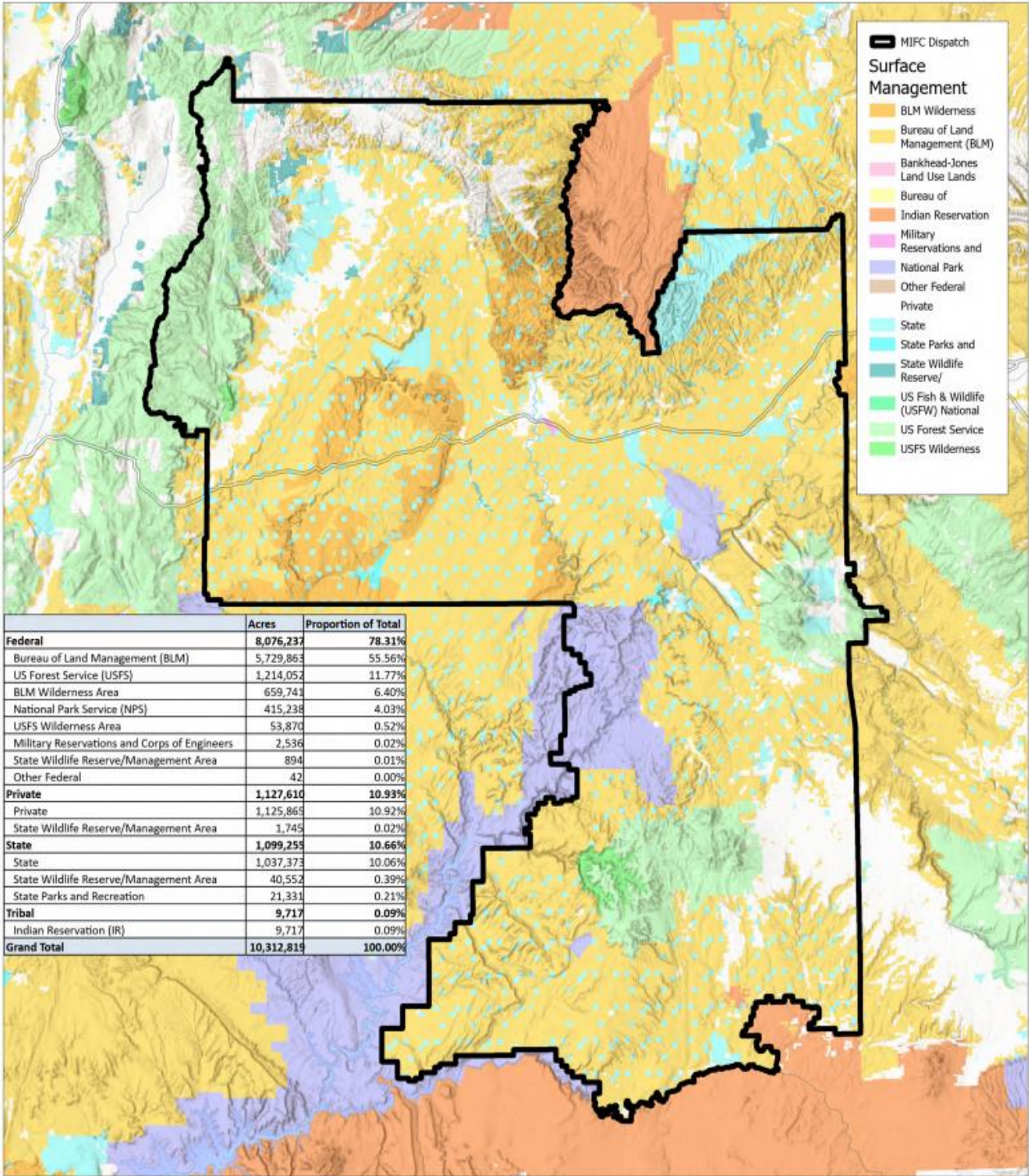


The Red Rock Regulars Type 2 Initial Attack Hand crew completed 3 assignments during the 2024 fire season. The first assignment was on 7/18 to the Bench Lake fire ID-STF. They were reassigned from there to the Wolf Creek fire ID-PAF. Their second roll was to the 2024 CIC GACC Support on 8/14. The final roll for the year came on 9/3 to the Hammer fire in ID-SCF. The crew was reassigned to the NUC GBCC Support on the 11th, then the South Willow fire on the 13th, Rudd Creek 9/14, Elizabeth 9/14, Pearl 9/16. Their third roll ended with their assignment on the Bronco fire on 9/18.

Surface Management Agency



3/5/2025



	Acres	Proportion of Total
Federal	8,076,237	78.31%
Bureau of Land Management (BLM)	5,729,863	55.56%
US Forest Service (USFS)	1,214,052	11.77%
BLM Wilderness Area	659,741	6.40%
National Park Service (NPS)	415,238	4.03%
USFS Wilderness Area	53,870	0.52%
Military Reservations and Corps of Engineers	2,536	0.02%
State Wildlife Reserve/Management Area	894	0.01%
Other Federal	42	0.00%
Private	1,127,610	10.93%
Private	1,125,865	10.92%
State Wildlife Reserve/Management Area	1,745	0.02%
State	1,099,255	10.66%
State	1,037,373	10.06%
State Wildlife Reserve/Management Area	40,552	0.39%
State Parks and Recreation	21,331	0.21%
Tribal	9,717	0.09%
Indian Reservation (IR)	9,717	0.09%
Grand Total	10,312,819	100.00%

Scale: 1:1,530,682 0 10 20 Miles

No warranty is made by the Bureau of Land Management as to the accuracy, reliability, or completeness of these data for individual use or aggregate use with other data. Original data were compiled from various sources. This information may not meet National Map Accuracy Standards. This product was developed through digital means and may be updated without notification.